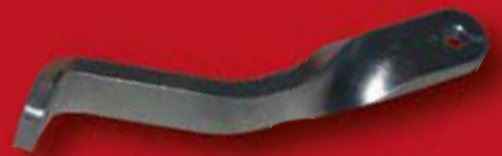
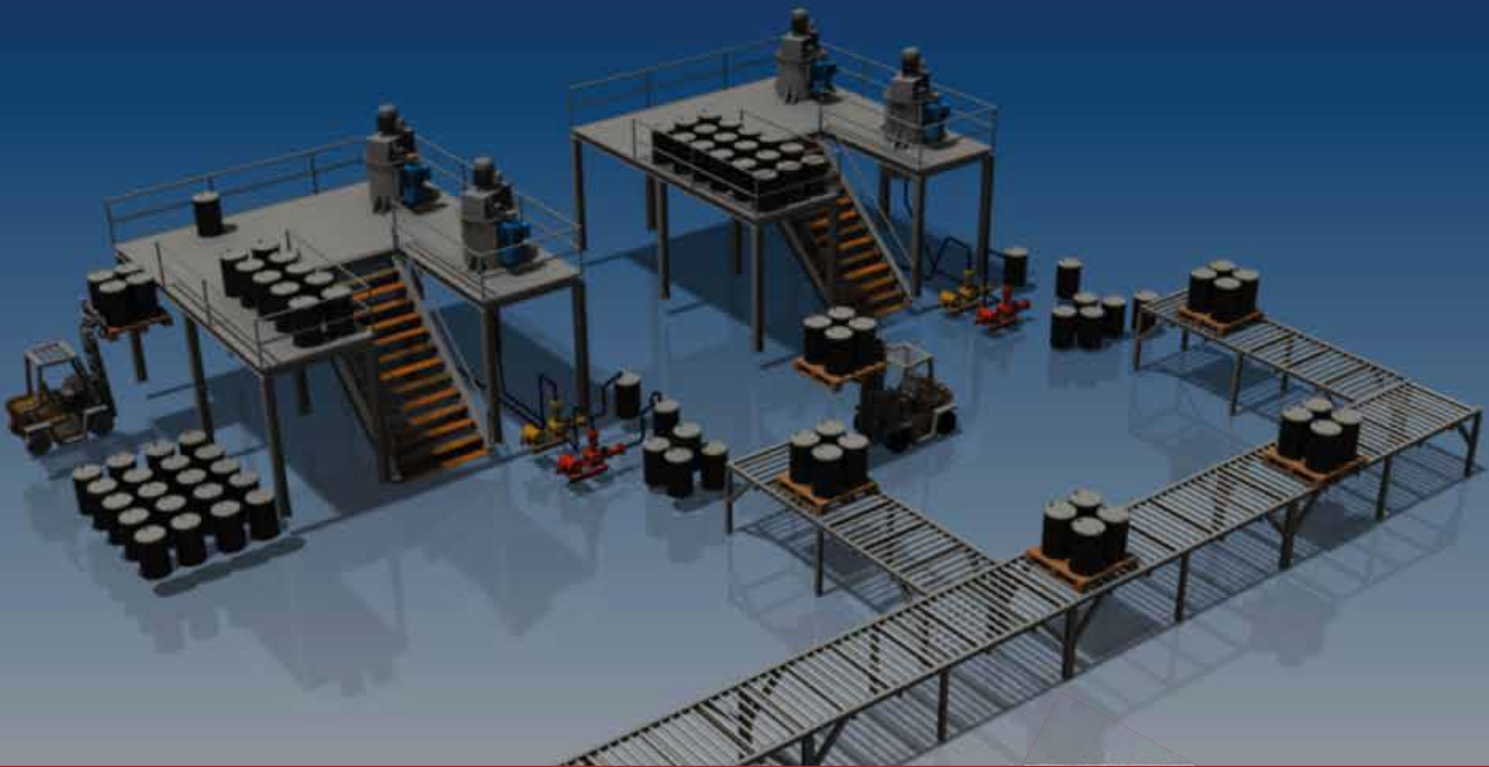




**WESTLINK**  
**INDUSTRIES**

**WESTLINK INDUSTRIES SDN BHD** (201401011646(1087723-W))



## About Us

WESTLINK INDUSTRIES SDN BHD was established in 2014, organized by a team with over 25 years of experience in engineering field, specialized in mechanical engineering, designing, AUTOCAD drafting, universal supplies and more.

Our excellent track record and dedication to service have continuously added value and built trust with our business partners and customers. The quality and high standards in our products and services is reflected in every stage from the drawing board of industrial design to the production and delivery.

Our mission is to ensure every customer's needs are met with nothing short of precision and excellence. In order to achieve this, our team members are continuously trained, upgraded and updated to provide the best support to all our customers throughout the business relationship.

Our commitment to our customers is to provide the best personnel, using the best tools and methodologies to facilitate quality service at the lowest possible cost in the safest possible manner.

To this end, WESTLINK INDUSTRIES SDN BHD will continue to serve with commitment and integrity.



In year 2021, our team designed and fabricated two units of vent silencer in two different sizes according to our client's request, and we managed to successfully deliver both units to PREFCHEM in two weeks after doing all kinds of required tests.



**WESTLINK  
INDUSTRIES**



Website



e-Brochure

### **WESTLINK INDUSTRIES SDN BHD**

BRN: 201401011646(1087723-W) TIN: C23251209040

#### **Selangor Workshop & Office (HQ)**

9 & 11, Jalan TK 5/44, Kinrara Industrial Park,  
47100 Puchong, Selangor, Malaysia.

#### **Johor Workshop (Branch)**

Lot B-3, PTD 1485, Kampung Bukit Raja,  
Sungai Rengit, 81600 Pengerang, Johor.

#### **CT Yap**

Sales Executive

#### **Whatsapp/Phone No.:**

+6012 686 0525

#### **Email:**

ct@westlink-ind.com

#### **Website:**

www.westlink-ind.com

**Quality is important to us.**

**We ensure that each and every machined part leaves the factory exactly to specification and operate a fully documented quality management system under the ISO quality management scheme accredited by QC Systems.**



## Welding

We offer MIG /Flux Core, GTAW /TIG, SMAW /MMA for joining metal and running seams on mild steel and stainless steel. Welding offered includes seam, fillet, groove, surface welding, tank, pipe welding, customized products and repairing.



## Assembly

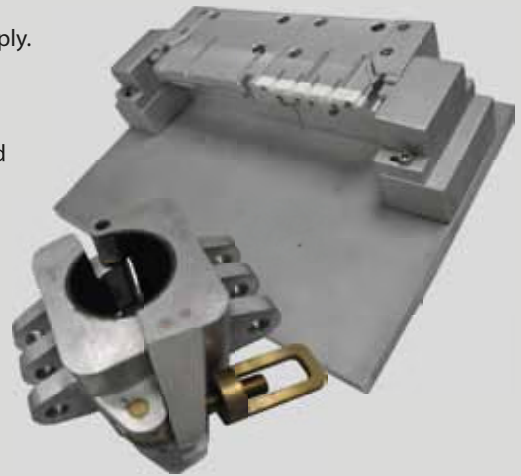
We offer assembly and sub-assembly services including kitting and full product supply. Typical assembly operations are detailed below.

### Fixtures & Fittings

We undertake fitting of fixtures such as helicoils, threaded inserts, clasps, hinges and other items.

### Jigs & Fixtures

For high volume work we undertake jig fabrication for precision assembly of welded fabrications.



## CNC Machining



### Precision-Machined Metals:

UTM provides value-added metal machining services for specialty, harsh-environment metals.

- Machining and grinding of ferrous and nonferrous materials (including super alloys)
  - 4 Axis machining in max.
- Inspection and Testing
  - Hardness Testing
  - CMM Inspection (probe and scanning)
- Contract Manufacturing and Inventory Management
  - Mechanical/electromechanical modules, assemblies and sub assemblies
  - Just in Time and Dock to Stock delivery integration
  - Vendor managed inventory and contractual inventory consignment
  - ERP Forecasting and planning system integration

### High-Performance Plastics:

CNC Machines, simple lathes, grinders, and polishers all help to provide the tight-tolerances required for high-performance plastic components.

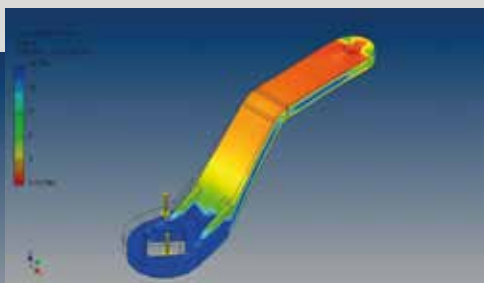
## PLC Programming and Wiring

We have experience with several brands of PLC's and have designed and deployed PLC based systems in various industries. We consider ourselves somewhat of a "cross pollinator" as we use our skills attained over the years and are able to apply these learned solutions to industries and markets that might not have had the application of that particular approach. Our knowledge with PLC brand - Mitsubishi, Omron and Delta.

New panel for wiring based on the electric drawing and without the electric drawing, we offered design for the circuit as well. beside that, We also provided refurbishing of the panel and wiring.



## Designing



Outsourcing some or all of your drawing and drafting work to give you access to a highly flexible resource that integrates with your business and puts you in full control of the workflow.

Whether you are looking to outsource all of your CAD work, or are seeking to manage peaks and troughs in workflow more cost-effectively, WESTLINK INDUSTRIES is the ideal partner.

## Coordinate Measuring Machine (CMM)



Approximately measuring size :  
600mm (H) x 900mm (L) x 900mm (W)

Some of the most important factors to a Coordinate Measuring Machine owner are to increase quality, improve productivity, eliminate downtime and reduce the operating costs of their equipment. Tako CMM Services plays a vital role in achieving these goals. We provide our customers with the highest quality services in the industry.

## Profile Projector



- Protractor Screen Diameter 353mm
- Erect-reversed Image Digital display (XY/angle)

## Hydraulic Pressing Machine



## Stamping Machine



## Bending Machine



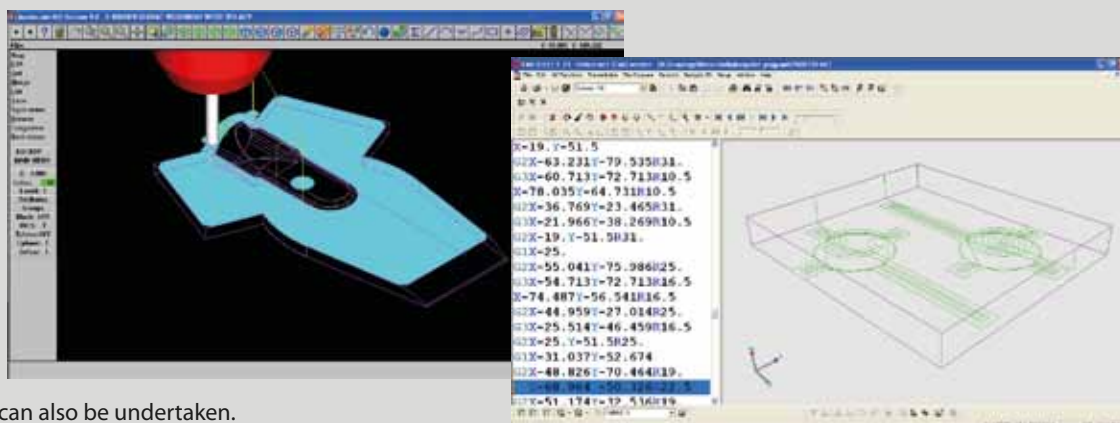
## Our Services

- OEM Replacement parts
- Low/High Volume Contract Machining
- Machining/Lathing
- Fabrication
- Welding
- Design/Build
- Custom Engineering Services
  - Automation
  - Mechanical
  - Electrical

Assembly	Engineering Services	Equipment/ Installation	Fabrication	Machining
- Mechanical	- CAD Services - Product Design - Reverse Engineering - Tool/Mach Design	- Automation - Process/Plant	- Bend/Form/Roll - Punching - Welding/Brazing	- Electric Discharge, Sink - Milling and Turning

## CAD/CAM

We undertake all milling operations including pocketing, drilling, tapping, boring, form milling and radiusing with a range of optional surface finishes. Secondary operations such as debarring and chamfering can also be undertaken.





# Our Facilities

## CNC Milling

We offer milling for billets up to 1800 x 250mm x 250mm in most materials including steel, copper, stainless steel, brass, aluminum, plastics and others for both large and small batches.



### Capacity

We've 5 milling centre machines and our milling centre offer 1800mm x 800mm x 650mm max. movement work envelope and a 40 taper, 8,000 rpm spindle. The machines is equipped with Fanuc's control system, bringing the flexibility and power advanced programming environment to the core of our service. The machine uses G Code or Conversational Programming and can accept pre-programmed files. The machine has a high and a low range of spindle speeds which allow us to work with a range of materials accurately:

- Low Range: 80 to 549 RPM
- High Range: 550 to 8000 RPM

## CNC Lathing

We operate 6 CNC turning centres with capacity for up to 52mmØ bar and 1 Chucking CNC lathe. Each machine offers chucking with a maximum capacity of up to 400mmØ. These machines allow us to undertake volume turning up to 10,000 off however the bulk of our work is low volume production ranging from 20 to 500 off.

### Materials

All materials are supported including steel, copper, stainless steel, brass, aluminum, plastics and others as well as exotic materials such as nickel alloys, nitronics, inconels, titanium and aerospace alloys. Specialist turning we have undertaken includes antenna mounts for aerospace applications and components for subsea drilling operations.



## CNC Plasma Cutting



CNC Plasma Cutting has become a popular way of metal cutting. This is mainly attributed to the costs involved and because of the great precision that is able to be achieved through this process.

This method of cutting is an inexpensive process for high yield production, high material utilization with accuracy and quality.

Custom Cutters 4'x8' CNC plasma cutting machine cuts up to 3/8" aluminum, 1/2" steel plate, 3/8" stainless steel and many other metals.

## Surface Grinding Machine

Vertical Grinding wheel Slide Movement down at right side in the body. The Vertical wheel dial least count in 0.01 mm. and Micro feed least count un 0.002 mm.

Working Surface of the table	225 x 450 mm	300 x 600 mm
Maximum Height from table to Grinding Wheel	275 mm	275 mm



## Hardness Testing Machine

- Suitable for Rockwell Tests.
- Manually Operated.
- Auto zero setting dial gauge.
- Preliminary Test Force - 98.07 N (10kgf).
- Additional Test Force - 490.3, 882.6, 1373N (50.90, 140 kgf).
- Total Test Force - 588.4, 980.7, 1471N (60, 100, 150 kgf).
- Test Force Selection by external dialing.

## Laser Marking

We provide laser marking service on material surface such as stainless steel plate to do name tag, add a marking on a shaft or valve body and more. We are also able to laser mark according to customer's requirement, following given drawing or help design a template as per request.



## Fluorocarbon Coating (FCC)



Fluorocarbon coating is highly durable, corrosion, resistant to weathering and UV radiation.

Its high level of hardness makes it ideal to use in heavy-duty anti-corrosion fields, widely apply on petroleum equipments, bridge components and high-grade buildings. The most common color we offer for FCC is blue coating, but also available in other colors such as green and black.

## Metal Spray/HVOF

Metal spray (thermal spray) provides a thick coating onto a material surface like cast iron, stainless steel, mild steel, etc., to build up all kinds of machinery parts or car parts, such as stem, rotor, valve body, wheel, shaft, exhaust and any damaged parts. The result is much better than welding due to its low porosity.

Besides, it is also best to repair discontinued broken parts that can no longer be replaced.



**WESTLINK INDUSTRIES SDN BHD** is at the heart of the systems that are essential to our society. From manufacturers to machine maker, from hospitals to manufacturers, from telecommunication companies to world-wide shipping companies, industrial engineers design solutions to improve the performance of complex systems of people, technology, and information.



### Products

- Brackets
- Adapters
- Racks
- Fittings
- Nipples
- Elbows
- Pipes
- Tubes
- Hoses
- Shaft
- Flanges
- Spade Blind
- Bearings
- Conveyor
- Gasket
- Name Tag
- O-Ring
- Stud Bolts
- Strainer
- Silencer
- Special Tools
- Spectacle Blind
- Fully Auto Mixers
- Semi Auto Mixers
- Manual Mixers
- Vibration Mixers
- Wheel Clamp
- Propeller & Agitator
- Strainer/Cone Strainer
- Universal Supplies

### Services

- Fabrication
- Modification
- Automation
- Bending
- Forging
- Stamping
- Welding
- Polishing
- Repairing
- Servicing
- Metal Spray
- Laser Marking
- FCC Coating
- Plate Cutting
- Sand Blasting
- Designing
- CNC Milling
- CNC Lathing
- CMM
- Profile Projector
- Surface Grinding
- PCB Designing
- Hydraulic Pressing
- Hardness Testing
- AutoCAD Drafting
- PLC Programming
- CNC Programming
- CNC Plasma Cutting
- Manual Plasma Cutting
- Custom Made



TWI Training (UK)  
- SMAW  
- GTAW

Contact us  
for more  
information!



## WESTLINK INDUSTRIES SDN BHD

(201401011646(1087723-W))

### SELANGOR WORKSHOP & OFFICE :

9 & 11, JALAN TK 5/44, KINRARA IND. PARK, 47100 PUCHONG, SELANGOR.

### JOHOR WORKSHOP :

LOT B-3, PTD 1485, KAMPUNG BUKIT RAJA, SUNGAI RENGIT, 81600 PENDERANG, JOHOR.

PHONE NO. / WHATSAPP: +6012-6860525

EMAIL: info@westlink-ind.com

WEBSITE: www.westlink-ind.com



Website



e-Brochure